



DE **Ausziehbare Einstiegshilfe**

Montageanweisung

EN **Extendable access aid**

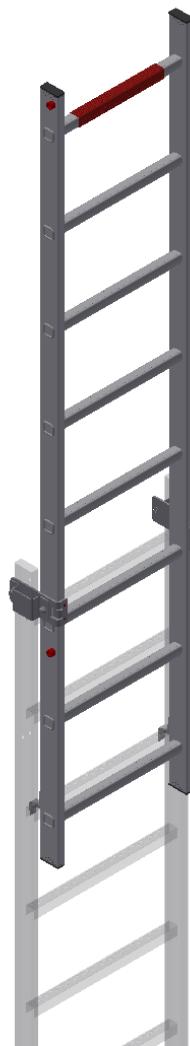
Assembly instruction

FR **Aide d'entrée extensible**

Instructions de montage

ES **Apoyo de acceso extensible**

Instrucciones de montaje



HYMER

20010312

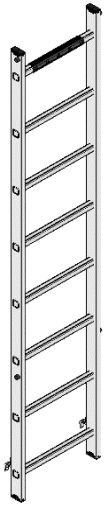
Hymer-Leichtmetallbau GmbH & Co. KG

Käferhofen 10 | 88239 Wangen | GERMANY

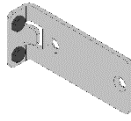
Tel. +49 (0)75 22 700-702

technical-sales@hymer-alu.de | www.hymer-steigtechnik.de

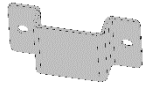
1



2 20001810



3 20001756



4 20001378



10



4x
M8 x 22
20000216

11



4x
M8
006700

15



1x 21000033



1.

